



For immediate release

Visual Arts-Call for Project Submissions for the 2012-13 Season

St. Camille (Qc), January 24th, 2012- The Artistic Committee for the Hortense Gallery is calling for project submissions in order to complete its programming for the upcoming 2012-13 season.

The Hortense Gallery is a forerunner of innovation and solidarity and known for its cultural enrichment of this dynamic rural community via the visual arts for over the last twenty years. There are six exhibitions per year, including Photo month in September. The gallery also hosts workshops in various artistic disciplines.

Accepted mediums include: Painting, Sculpture, Printmaking, Photography, Mixed Media, Installation, Video, New Medias.

Portfolio Requirements:

- Artist's Curriculum Vitae (maximum three pages, format .doc.or .pdf for all items)
- Artist Statement (maximum one page)
- Project Presentation/Theme (one page max.)
- Visual support documentation (15 to 20 works, jpeg 1000 X 800 pixels/in. max. or one ten min. DVD for Video projects)
- Descriptive List of Work Presented(Title; Dimensions, Materials, Date)
- Press Kit (if available)

The Hortense Gallery is situated on the second floor, measuring 43 X 21 X 8.5 ft high ceilings (see plan). The walls are covered with wainscoting of about four inches, painted white. The floor is hardwood. There is the possibility to expose works on the first floor however, only the walls (gypsum) are available because of show presentations and community events.

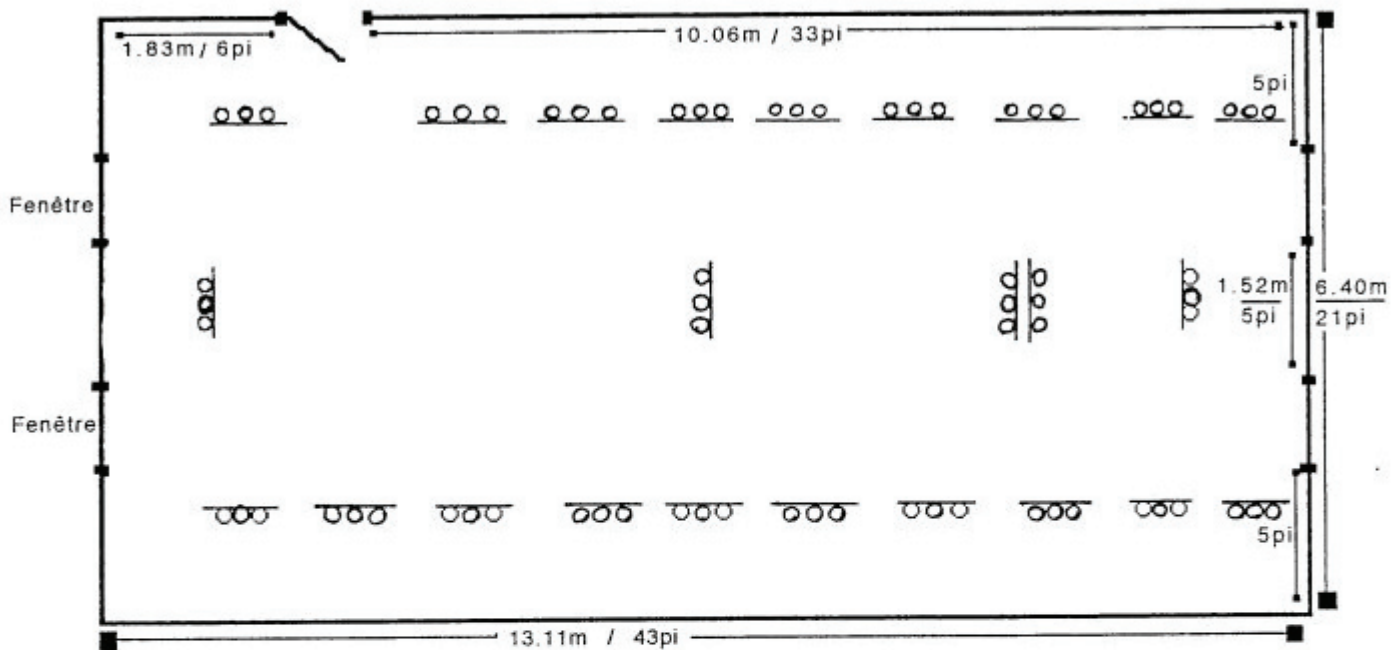
The Hortense Gallery organizes the Opening; the conception and impression of fifty invitations, 10-15 posters, email press release and invitation to the Opening for the Communication Medias; members of the P'tit Bonheur and other participating artists and friends.

Projects must be posted before March 30th 2012 and addressed to Visual Arts committee or you also send your project by email, specifying Exhibition Project (2mo max.) at artsvisuels@ptitbonheur.org

For additional information please contact Visual Arts committee: Michael Veltkamp at 819-340-1993 # 208 or artsvisuels@ptitbonheur.org

PLAN ESPACE HORTENSE second floor

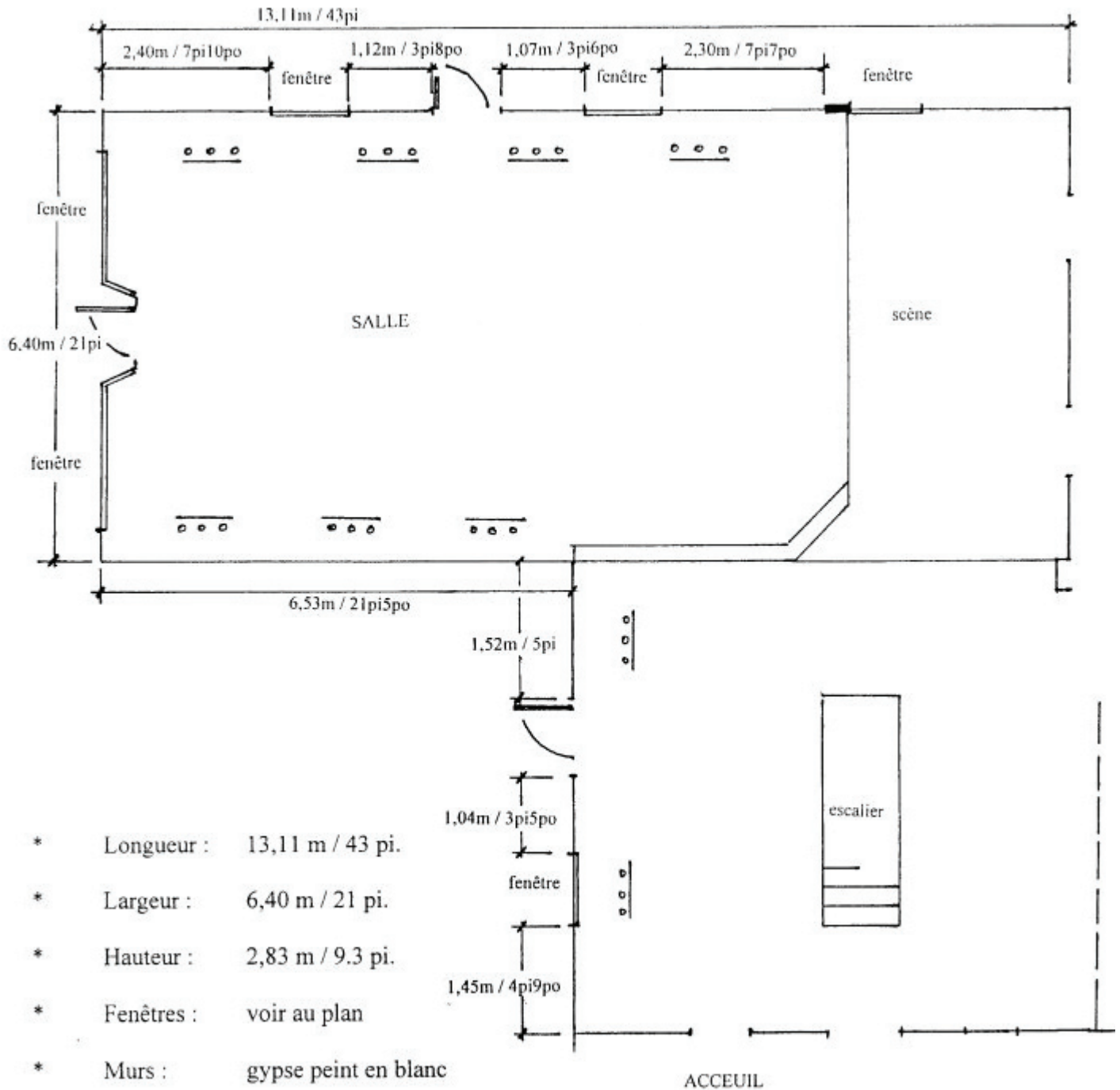
Données techniques ESPACE HORTENSE



- * Longueur : 13,11 m / 43 pi.
- * Largeur : 6,40 m / 21 pi.
- * Note : possibilité de rajouter 3 panneaux transversaux de 4 pi. X 8 pi. selon les besoins
- * Hauteur : 2,83 m / 9.3 pi.
- * Fenêtres : 4
- * Murs : lattes de bois peintes en blanc
- * Plancher : planches de bois franc en diagonales
- * Éclairage : 24 rampes de 3 lumières halogènes 12V / 50W.

PLAN ESPACE HORTENSE first floor

Données techniques REZ-DE-CHAUSSÉE



- * Longueur : 13,11 m / 43 pi.
- * Largeur : 6,40 m / 21 pi.
- * Hauteur : 2,83 m / 9.3 pi.
- * Fenêtres : voir au plan
- * Murs : gypse peint en blanc
- * Plancher : planches de bois franc
- * Note : possibilité d'accrochage dans le secteur d'entrée
- * Éclairage : 9 rampes de 3 lumières halogènes 12V / 50W.